

PROJECT MANAGEMENT & ENGINEERING SERVICES TO SUBSEA OCEAN OBSERVING NETWORKS

OUR ABILITIES

Ocean Specialists, Inc. (OSI) is a subsea engineering company that specializes in the planning and development of subsea ocean observing networks, which support oceanographic research, environmental baselines, and long-term monitoring.

OSI is committed to supporting the ocean observing market as it develops and grows into a key source of information for the science and energy industries. OSI's subsea network expertise allows us to provide end-to-end development services. We specialize in all aspects of planning, engineering, implementation and operation.

OSI is dedicated to delivering high-quality subsea services and systems on a global scale, with project experience ranging from regional to international networks throughout the Americas, Asia Pacific, Africa, and Europe. In addition, OSI's direct access to the resources of our sister companies, as shown on the following page, allows OSI to deliver a more extensive solution to the benefit of any subsea cable system.

OUR APPROACH

OSI's approach is designed to ensure project success by mitigating the significant risks inherent in a subsea network development project. We work with our clients to take ownership across the full development life cycle, managing critical elements of the business forming, technology assessment, supplier selection, and manufacturing and installation quality assurance processes.

OUR CLIENTS

Offshore Renewable Entities
Telecom Operators
Oil and Gas Operators
Academia and Science Entities
Government Agencies
Defense Departments
Global Ministry Agencies

Private Equity Institutions
Investment Banks
Insurance Companies
Global Development Banks
Private Cable Developers
Individual Investors

INDUSTRIES WE SERVE

OCEAN OBSERVING



Protecting the ocean environment.

OIL & GAS



Connecting onshore and offshore assets.

TELECOM



Developing fiber optic networks.

PROJECTS COMPLETED

- 26 Full Network Development
- 33 Permitting, Survey & Post Implementation Assessments
- 30 Financing Support & Guidance
- 53 Technical & Commercial Recommendations
- 94 Market Feasibility Studies
- 15 Landing Station, Colocation & Backhaul Planning

CORPORATE GROUP RESOURCES

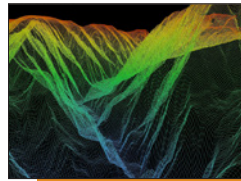
OSI is part of the Continental Shelf Associates, Inc. family of companies which gives us access to all of the group's capabilities.

MARINE SCIENCES



Our group's multidisciplinary marine sciences team provides independent, credible surveys, assessments, baseline and incident-related studies and data analyses to governmental entities and companies active in the marine and coastal environment.

ENVIRONMENTAL DATA & GEOSPATIAL SERVICES (EDGS)



The EDGS team serves clients by helping them integrate, manage, share, visualize and present environmental data and related information through a customizable, user-friendly cloud-based platform.

MARINE OPERATIONS



Our marine operations staff has extensive operational experience conducting multidisciplinary surveys in support of coastal and marine environmental programs and integrated efforts to collect physical data from the world's aquatic environments.

TOOLING & EQUIPMENT



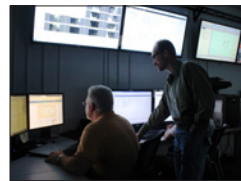
Our corporate group has the in-house capability to design, build and deploy tools used in environmental sampling programs and surveys. The group also includes a company that rents a broad catalog of marine scientific tools and instruments.

TECHNOLOGY DEVELOPMENT



Within our family of companies, we have the capability to design and build a range of sophisticated unmanned marine systems backed by world-class field support and training for use in survey, security and maintenance applications.

GLOBAL NETWORK OPERATIONS



We provide 24x7 network monitoring and management from a fully staffed Network Operations Center. Our network team supports carriers, enterprise and science customers.